

ml
800



We create chemistry

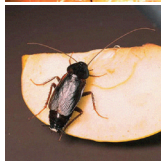
700

Fendona® 6

Reg. No. L5678; N-AR 0729;

Act No. 36 of 1947

READ ATTACHED PACKAGE OR LEAFLET BEFORE USE.
KEEP OUT OF REACH OF CHILDREN AND ANIMALS.



600

A long lasting suspension concentrate contact and stomach insecticide for the control of malaria vectors, nuisance and biting flies, cockroaches (american and german), bedbugs, fleas, mosquitoes, hide beetle larva, fishmoths, stableflies, ants and *Alphitobius* larva and beetle.

'n Suspensiekonsentraat kontak- en maaginsekoder met 'n lang nawerkende aksie vir die beheer van malarievektore, hinderlike- en steekvlieë, kakkerlakke (amerikaanse en duitse), weeluis, vlooië, vismotte, muskiete, velkewerlarwes, perdevlieë, miere en *Alphitobius*-kewer en -larwe.



500

Very toxic to aquatic life with long lasting effects.
If medical advice is needed, have product container or label at hand.
Collect spillage.

Active ingredients / Aktiewe bestanddele:
Alpha-cypermethrin (Pyrethroid).....60 g/l

400

Registered by:
BASF South Africa (Pty) Ltd
Co. Reg. No. 66/10235/07
P.O. Box 2801
Halfway House 1685
+27 11 203 2400

Geregistreer deur:
BASF Suid-Afrika (Edms) Bpk
Mpy Reg. Nr 66/10235/07
Posbus 2801
Halfweghuis 1685
+27 11 203 2400

300

Batch No. & Date manufactured: Refer to details printed on container.
Lotnommer & Datum vervaardig: Verwys na besonderhede gedruk op houer
EMERGENCY NUMBER / NOODNOMMER: +27 82 446 8946



81164631 ZA 2102



200
ml

1 l

® = Registered trademark of BASF / Geregistreeerde handelsmerk van BASF

ENGLISH

WARNINGS

Hazard Statements

- Very toxic to aquatic life with long lasting effects.
- Concentrate is poisonous when swallowed and moderately toxic by skin contact.
- Not significantly hazardous to bees, various other beneficial pest parasites and predators and fish under field conditions, provided the product is used as directed.
- Do not spray over or allow drift to contaminate drinking water and water bodies such as dams, ponds, rivers, streams or fish hatcheries.
- Moderately toxic to wildlife.
- Store in a cool place away from food and feedstuffs.
- Keep concentrate out of reach of children, uninformed persons and animals.
- Do not apply directly onto animals.
- Do not apply to surfaces where food is handled.

Although this remedy has been tested under a large variety of conditions the registration holder does not warrant that it will be efficacious under all conditions because the action and effect thereof may be affected by factors such as abnormal soil, climatic and storage conditions, quality of dilution water, compatibility with other substances not indicated on the label, and the occurrence of resistance of a pest against the remedy concerned as well as by the method, time and accuracy of application. The registration holder furthermore does not accept responsibility for damage to crops, vegetation, the environment or harm to man or animal or for lack of performance of the remedy concerned due to the occurrence of conditions which could not have been foreseen in terms of the registration. Consult the supplier in the event of any uncertainty.

PRECAUTIONS

Precautionary Statements

- If medical advice is needed, have product container or label at hand.
- Keep out of reach of children.
- Read carefully and follow all instructions.
- Collect spillage.
- Dispose of contents and container to hazardous or special waste collection point.
- Avoid eye splashes, skin contact by and inhalation of spray mist.
- Wear protective clothing: Overall, gloves and facemask.
- Wash with soap and water after use or after accidental skin contact.
- Do not eat, drink or smoke while mixing or spraying or before washing hands and face.
- Prevent contamination of food, feedstuffs, eating utensils and drinking water.
- Remove pets and aquaria or cover aquaria.
- Thoroughly wash and rinse the spray equipment / containers / basins after use and dispose of wash water where it will not contaminate crops, grazing, rivers and dams.
- TRIPLE RINSE empty container in the following manner: Invert the empty container over the spray or mixing tank and allow to drain for at least 30 seconds after the flow has slowed down to a drip. Thereafter, rinse the container three times with a volume of water equal to a minimum of 10% of that of the container. Add these rinsings to the contents of the spray tank.
- Destroy empty container and do not re-use for any other purpose.

RELEVANT SUBSTANCES

Hazardous ingredients According to UN GHS criteria	CAS number	Concentration (W/W)
α-cypermethrin (ISO); racemate comprising (R)-α-cyano-3-phenoxybenzyl (1S,3S)-3-(2,2-dichlorovinyl)-2,2-dimethylcyclopropanecarboxyl ate; (S)-α-cyano-3-phenoxybenzyl(1R,3R)-3-(2,2-dichlorovinyl)-2,2-dimethylcyclopropanecarboxylate	67375-30-8	5,83 %
1,2-Benzisothiazol-3(2H)-one	2634-33-5	< 0,05 %
Propane-1,2-diol	57-55-6	< 20 %

FIRST AID TREATMENT

Remove contaminated clothing.

ON CONTACT WITH EYES:	Wash affected eyes for at least 15 minutes under running water with eyelids held open.
ON INGESTION:	Rinse mouth and then drink 200-300 ml of water.
ON CONTACT WITH SKIN:	Wash thoroughly with soap and water.
IF INHALED:	Keep patient calm, remove to fresh air.

Most important symptoms and effects, both acute and delayed

Symptoms: numbness and tingling of hands and feet, lung oedema, convulsions

Indication of any immediate medical attention and special treatment needed

Treatment: Symptomatic treatment (decontamination, vital functions).

DIRECTIONS FOR USE: USE ONLY AS DIRECTED

Compatibility:

Do not mix FENDONA® 6 with any other chemical.

Mixing instructions for spraying:

Half fill the sprayer with clean water. Measure the required volume of FENDONA® 6 and pre-mix this with some water. Add this mixture to the water in the sprayer. Fill the sprayer with water to the required level and shake the sprayer well to ensure proper mixing or ensure continual mechanical or hydraulic agitation before spraying commences. Prepared spray mixture must not be left in the spray tank for any length of time e.g. overnight.

General directions:

- FENDONA® 6 is a long lasting suspension concentrate contact and stomach insecticide for the control of malaria vectors, flies, cockroaches, bedbugs, fleas, fish moths, mosquitoes, ants, hide and skin beetles and larvae and litter beetle and larva. The length of control depends on:
 - the insect species being treated,
 - the level of infestation,
 - the type of surface (or bed-net fabric),
 - whether the treatment is applied indoors or outdoors,
 - exposure to sunlight and weather conditions and,
 - depending on dosage rate, months of control can be expected indoors and on bed-nets, and several weeks outdoors under favourable conditions.

- **FENDONA® 6** spray mixture is colourless and odourless and can be used indoors or outdoors, in and around homes, factories, hotels, shops, food handling and processing establishments, hospitals, schools, dairy parlours, piggeries, stables, poultry houses, dog kennels, refuse dumps and similar places where high levels of hygiene are required.

Poultry uses:

- **Poultry sheds:** All cracks, crevices and potential hiding places where the litter beetle may seek shelter must receive special attention. Ensure thorough wetting of all surfaces including vertical surfaces up to at least one metre above the ground. **FENDONA® 6** will control but will NOT eliminate existing populations of litter beetles that have invaded and colonised the insulation of cavity walls or other protected places.
- **Broiler sheds:** Should be treated before restocking with each new batch of chicks, i.e. after the clearing, cleaning and disinfecting operations have been carried out.
- **Laying sheds:** Should be treated on a regular basis. Frequency will depend on the type of surface to be treated. Dropping and litter heaps may require treatment more often. New and empty cages can be treated BEFORE stocking with hens. DO NOT SPRAY THE BIRDS DIRECTLY OR ALLOW THE SPRAYMIST TO DRIFT OVER THEM.

Malaria vector control:

Surface sprays

- Use a sprayer fitted with a nozzle that will deliver coarse droplets at a low pressure. Do not spray at high pressure that will result in a spray mist.
- Ensure total coverage of all surfaces. All cracks, crevices and potential hiding places where mosquitoes may seek shelter must receive special attention.
- Allow spray to dry on treated surfaces before re-entering.

Bed-nets

- All nets need to be washed and dried before treatment. Some new nets are sometimes starched, and must therefore be washed first to remove the starch. Ensure that all traces of soap are rinsed out after washing and before treating with **FENDONA® 6**, as alkaline soap residues could influence the persistence of the treatment.
- The volume of **FENDONA® 6** to be used per bed-net is dependent on the length of time that control is required, as well as the size of the net.

Months of control required (dose active ingredient)	Single bed-net (±12 m ²)	Doublebed-net (±16 m ²)	Queen sizedbed-net (±20 m ²)	King sizedbed-net (±24 m ²)
4 – 6 months (20 mg a.i./m ²)	4 mℓ	5.5 mℓ	6.5 mℓ	8 mℓ
more than 9 months (40 mg a.i./m ²)	8 mℓ	10.5 mℓ	13.5 mℓ	16 mℓ

- Bed-net fabric, mesh size and accessories such as a roof, border or string ties, affect the volume of water needed to treat and thoroughly wet a net. Generally 30 mℓ mixture /m² is needed for synthetic materials (e.g. polyester) and 130 – 150 mℓ/m² for cotton.
- Rough guidelines for the amount of water needed to wet different size bed-nets are given below (it is recommended however that the exact absorption volume for each type and size of net be determined before treatment).

Fabric	Single bed-net (±12 m ²)	Double bed-net (±16 m ²)	Queen size bed-net (±20 m ²)	King size bed-net (±24 m ²)
Synthetic material (e.g. Polyester)	360 mℓ	480 mℓ	600 mℓ	720 mℓ
Cotton	1700 mℓ	2250 mℓ	2800 mℓ	3400 mℓ

Mixing Instructions for treating bed-nets.

- Use a suitable container / bucket / bowl / bag, that is large enough to hold the bed-net as well as the required amount of water.
- Treat nets outside or in a well-ventilated area and use gloves.
- Fill the container with the predetermined volume of water to fully wet the bed-net to be treated. Add the correct volume of **FENDONA® 6** (see above) to the water and mix well.
- Soak the net in the mixture until it is thoroughly wet.
- Remove the net and allow excess to drip back into the container. (If the correct amount of mixture was used, there should be very little left).
- Allow the net to dry evenly by laying it on a bed or bedding (which helps to kill bedbugs) or on a plastic sheet outside in the shade.
- When net is dry, it may be hung over the bed.
- After treating nets, wash hands, arms, and container and dispose of wash water where it will not contaminate crops, grazing, rivers and dams.
- The effect of the treatment will not be the same if the net is washed after treatment, and a re-treatment is advisable.
- Bed-nets treated with **FENDONA® 6** will not be stained or have an odour after treatment and will not be more flammable.
- To treat several identical nets, a larger volume of mixture can be prepared by multiplying the volume of **FENDONA® 6** as well as the volume water needed per net, by the total number of nets to be treated.

All spray applications must be made with suitable equipment that is in good working order and correctly calibrated to ensure the desired coverage for that particular method of application.

PEST	DOSAGE	DIRECTIONS FOR APPLICATION
HIDES & SKINS Hide beetle larvae	35 mℓ/10 ℓ water	Hides and skins: Thoroughly wet all parts. Repeat treatment every 3 months or when necessary.
Hide beetle adults	35 mℓ/10 ℓ water	Warehouse floors, walls and other surfaces: Apply spray mixture to the point of run-off. Repeat treatment every 3 months or if necessary.
MOSQUITO ADULTS (Including malaria vectors)	40 – 85 mℓ/10 ℓ water (12 – 25.5 mg a.i. / m ²)	Several months of control can be expected indoors at the highest dosage rates (160 mℓ/10 ℓ water), but at the lower dosage rate only 4 – 6 weeks control can be expected. The length of control is determined by the dosage rate and the type of treated surface. (See also General Directions under DIRECTIONS FOR USE above) Apply as a coarse spray to surfaces where insects settle in areas where re-sprays can be done every 4 – 6 weeks. Apply to point of run-off. Use higher dose rate for longer lasting control or where infestation is severe. Repeat if necessary.

PEST	DOSAGE	DIRECTIONS FOR APPLICATION
	160 ml/10 ℓ water (50 mg a.i. /m ²)	<p>MALARIA VECTOR – SURFACE TREATMENTS</p> <p>Recommended for use as a surface spray on coarse surfaces (such as clay and brick internal and external walls, roofs and ceilings, e.g. thatched). Use this rate where applications can be made only once or twice during the malaria infection period of October to May. Apply as a coarse spray to the point of run-off by using 50 ml spray mixture /m².</p> <p>If the applications will be made on smooth surfaces (such as glass and wood inside and outside the house) apply as a coarse spray to the point of run-off by using 25 ml spray mixture /m² by mixing 330 ml of FENDONA® 6 with 10 ℓ water. This will also result in applying 50 mg a.i. /m².</p> <p>BED-NET TREATMENT</p> <p>Mix the required volume FENDONA® 6 with enough water to wet a bed-net. Soak the net in the mixture until it is thoroughly wet. Use the higher rate for longer period of control.</p> <p>For amount of FENDONA® 6 refer to Bed-nets under MALARIA CONTROL above.</p> <p>See further information under General directions under DIRECTIONS FOR USE above as well.</p>
	20 mg a.i. /m ² OR 40 mg a.i. /m ²	
POULTRY SHEDS Lesser Mealworm / Litter beetle (<i>Alphitobius diaperinus</i>)	40 – 85 ml/10 ℓ water	Apply as a coarse spray to the interior surfaces of the sheds. Ensure thorough wetting of the floors, walls and other surfaces. Repeat if necessary. Use higher dose rate for longer lasting control or where infestation is severe. (See under General Directions above). DO NOT SPRAY THE BIRDS DIRECTLY OR ALLOW THE SPRAYMIST TO DRIFT OVER THEM.
PUBLIC HEALTH: Adult house flies, Adult stable flies, Ants, Bedbugs, Cockroaches (american & german), Fish moths, Fleas	40 – 85 ml/10 ℓ water	Apply as a coarse spray or with a paintbrush to cracks, crevices and any place where these insects may hide and on surfaces over which they may crawl or settle. Apply to point of run-off. Use higher dose rate for longer lasting control or where infestation is severe. Repeat if necessary.

AFRIKAANS

WAARSKUWINGS

Gevaarverklarings

- Baie giftig vir waterlewendende organismes met langdurige gevolge.

- Konsentraat is giftig indien ingesluk en matig giftig deur velopname.
- Nie betekenisvol riskant vir bye, verskillende ander nuttige plaagparasiete en -predatore en vis onder veldtoestande met dien verstande dat die produk gebruik word soos voorgeskryf.
- Moenie oor drinkwater en watermassas soos damme, poele, riviere, strome of visteeldamme spuit, of toelaat dat spuitnewel daarheen waai nie.
- Matig giftig vir wild.
- Bêre konsentraat in 'n koel plek weg van voedsel en voer.
- Hou buite bereik van kinders, oningeligte persone en diere.
- Moenie direk op diere aanwend nie.
- Moenie op oppervlakke waar voedsel hanteer word, aanwend nie.

Alhoewel hierdie middel onder 'n groot verskeidenheid toestande getoets is, waarborg die registrasiehouer nie dat dit onder alle toestande doeltreffend sal wees nie, aangesien die werking en effek daarvan, deur faktore soos abnormale grond-, klimaats- en bergingstoestande, kwaliteit van verdunningswater, verenigbaarheid met ander stowwe wat nie op die etiket aangedui is nie, en die voorkoms van weerstand van 'n plaag teen die betrokke middel beïnvloed kan word, die metode, tyd en akkuraatheid van toediening kan ook die werking en doeltreffendheid van die middel beïnvloed. Verder aanvaar die registrasiehouer nie verantwoordelikheid vir skade aan gewasse, plantegroei en die omgewing nie, of vir nadelige effek op mens of dier nie, of vir onvoldoende prestasie van die betrokke middel weens die versuim van die gebruiker om etiketaanwysings na te kom nie, of weens toestande wat nie kragtens die registrasie voorsien kon word nie. Raadpleeg die verskaffer in geval van enige onsekerheid.

VOORSORGMAATREËLS

Voorsorgverklarings

- Indien mediese advies benodig word, hou die produkhouer of -etiket byderhand.
- Hou buite bereik van kinders.
- Lees sorgvuldig en volg alle instruksies.
- Maak stortsel bymekaar.
- Raak ontslae van inhoud en houer deur na 'n gevaarlike- of spesiale-afval insamingsplek te besorg.
- Voorkom besoedeling van die oë, velkontak en inaseming van die spuitnewel.
- Dra beskermende klere: Oorpak, handskoene en gesigskerm.
- Was met water en seep na gebruik of toevallige velkontak.
- Moenie eet, drink of rook terwyl gemeng of gespuit word nie en alvorens hande en gesig nie eers gewas is nie.
- Voorkom besoedeling van voedsel, voer, drinkwater en eetgerei.
- Verwyder troeteldiere en vistenke of bedek vistenke.
- Was en spoel spuitapparaat / houers / emmers, deeglik uit ná gebruik en doen weg met waswater op so 'n manier dat dit nie gewasse, weiding, riviere of damme sal besoedel nie.

- Die leë houer moet DRIE KEER UITGESPOEL word soos volg: Keer die leë houer om oor die spuitnek of mengbak en dreineer vir minstens 30 sekondes nadat die vloeï tot 'n gedrupe verminder het. Spoel die houer daarna drie keer uit met 'n volume water gelykstaande aan 'n minimum van 10 % van die houer. Gooi hierdie spoelwater by die inhoud van die spuitnek.
- Vernietig leë houer en moenie vir enige ander doel hergebruik nie.

RELEVANTE STOWWE

Gevaarlike bestanddele Volgens UN GHS kriteria	CAS nommer	Konsentrasie (W/W)
α-cypermethrin (ISO); racemate comprising (R)-α-cyano-3- phenoxybenzyl (1S,3S)-3-(2,2-dichlorovinyl)-2,2-dimethylcyclopropanecarboxyl ate; (S)-α-cyano-3-phenoxybenzyl(1R,3R)-3-(2,2-dichlorovinyl)-2,2-dimethylcyclopropanecarboxylate	67375-30-8	5,83 %
1,2-Benzisothiazol-3(2H)-one	2634-33-5	< 0,05 %
Propane-1,2-diol	57-55-6	< 20 %

NOODHULPBEHANDELING

Verwyder besoedelde klere.

INDIEN IN DIE OË:	Spoel aangetaste oë dadelik vir ten minste 15 minute met lopende water uit terwyl die ooglede oopgehou word.
INDIEN INGESLUK:	Spoel mond dadelik uit en drink 200 – 300 ml water.
INDIEN OP DIE VEL:	Was deeglik met seep en water.
INDIEN INGEASEM:	Hou pasiënt kalm, verwyder na vars lug.

Belangrikste simptome en effekte, beide akuut en vertraag

Simptome: gevoelloosheid en tinteling van hande en voete, long-edeem, stuiprekkings

Aanduiding van enige onmiddellike mediese aandag en spesiale behandeling wat nodig is

Behandeling: Simptomatiese behandeling (dekontaminasie, lewensbelangrike funksies).

GEBRUIKSAANWYSINGS: GEBRUIK SLEGS SOOS VOORGESKRYF

Verenigbaarheid:

Moenie enige ander produk met FENDONA® 6 meng nie.

Menginstruksies vir bespuiting:

Maak die spuitnek halfvol met skoon water. Meet die benodigde hoeveelheid FENDONA® 6 af en meng dit vooraf met 'n hoeveelheid water. Voeg hierdie mengsel by die water in die spuitnek. Vul die spuitnek met water tot by die verlangde vlak en skud die spuitnek goed om te verseker dat die spuitmengsel behoorlik gemeng is, of verseker dat aanhoudende meganiese of hidrouliese vermenging toegepas is, alvorens daar begin word met bespuiting. Aangemaakte spuitmengsel moenie in die spuitnek gelaat word vir 'n onbepaalde tyd, bv. oornag, nie.

Algemene aanwysings:

- FENDONA® 6 is 'n suspensiekonsentraat kontak- en maaginskodder met 'n lang nawerkende aksie vir die beheer van malaria vektore, vlieë, kakkerlakke, weeluis, vlooië, vismotte, muskiete, velkewerlarwes en -volwassenes, miere en Alfitobius-kewer en -larwe. Die tydperk van beheer word beïnvloed deur;
 - die insekspesie wat behandel moet word;
 - die vlak van infestasië;
 - die oppervlak (of bednet materiaal) wat behandel word;
 - of die bespuiting binne- of buitenshuis gedoen word;
 - blootstelling aan sonlig en algemene weersomstandighede en
 - afhange van die dosis, kan onder gunstige toestande, verskeie maande se beheer binnenshuis en etlike weke buitenshuis, verkry word.
- 'n Spuitmengsel van FENDONA® 6 is kleurloos en reukloos en kan derhalwe gespuit word buite- of binne wonings, fabriek, hotelle, winkels, geboue waar voedsel verwerk word, hospitale, skole, melkerye, varkhokke en perdestalle, hoender- en hondehokke, vullishope en soortgelyke plekke waar 'n hoë mate van higiëne vereis word.

Pluimveegebruik:

- **Pluimveehokke:** Vir effektiewe beheer van die Alfitobius-kewer moet veral aandag gegee word aan die kewer se moontlike wegwakke, soos krake en holtes. Verseker goeie benutting van sulke oppervlakke asook vertikale oppervlakke tot op 'n hoogte van ten minste een meter vanaf die grond. Indien Alfitobius-kewers alreeds gevestig geraak het in die mure en ander beskermende plekke, sal FENDONA® 6 die getalle beheer maar NIE ten volle uitwis nie.
- **Braaikuikenhokke:** Bespuiting moet geskied nadat die hokke ontruim, skoongemaak en ontsmet is, maar voordat 'n nuwe groep kuikens hervestig word.
- **Lêhokke:** Bespuiting moet gereeld plaasvind. Die tyd tussen behandelings sal afhang van die oppervlak wat bespuit word. Mis en afvalhoop sal meer dikwels bespuit moet word. Nuwe en leë hokke kan behandel word VOORDAT henne daarin geplaas word. SORG DAT DIE VOËLS NIE DIREK RAAKGESPUIT WORD OF DAT SPUITNEWEL NA HULLE OORWAAI NIE.

Malariavektorbeheer:

Oppervlakbespuitings:

- Gebruik 'n spuit wat toegerus is met 'n spuitkop wat growwe druppels teen 'n lae druk kan lewer. Moet nie teen 'n te hoë druk toedien, wat 'n fyn mis sal lewer nie.
- Verseker dat alle oppervlakke deeglik benat word. Alle krake, holtes en moontlike wegwakke van muskiete moet veral aandag kry.
- Wag todat die bespuitte oppervlakke droog is voordat die bespuitte gebied weer binnegegaan word.

Bednette:

- Alle nette moet gewas en droog wees voor behandeling. Sommige nuwe nette is gestyf en moet ook eers gewas word. Spoel nette goed uit om van alle seep ontslae te raak, omdat seepresidue in die materiaal die na-werking van FENDONA® 6 kan beïnvloed.
- Die volume FENDONA® 6 wat benodig word vir die behandeling van 'n bednet is afhanklik van die lengte van beheer benodig, asook die grootte van die bednet.

Maande van beheer benodig (dosis aktiewe materiaal)	Enkel bednet (±12 m ²)	Dubbel bednet (±16 m ²)	Konings-grootte (±20 m ²)	Konings-grootte (±24 m ²)
4 – 6 maande (20 mg a.b. /m ²)	4 ml	5.5 ml	6.5 ml	8 ml
meer as 9 maande (40 mg a.b. /m ²)	8 ml	10.5 ml	13.5 ml	16 ml

- Die volume water wat benodig word om 'n bednet goed te benat is afhanklik van die grootte, die materiaal waaruit dit gemaak is en die vorm van die net. Vir sintetiese materiaal, soos poli-ester, word algemeen 30 ml spuitmengsel /m² benodig en vir katoen tussen 130 en 150 ml/m².
- In die tabel hieronder word 'n algemene riglyn gegee van die water wat benodig word om verskillende bednette deeglik te benat (dit word egter aanbeveel om die korrekte volume water vir elke tipe bednet te bepaal voordat dit behandel word).

Materiaal	Enkel bednet (±12 m ²)	Dubbel bednet (±16 m ²)	Koningins-grootte (±20 m ²)	Konings-grootte (±24 m ²)
Sinteties (bv. Poli-ester)	360 ml	480 ml	600 ml	720 ml
Katoen	1700 ml	2250 ml	2800 ml	3400 ml

Menginstruksies vir die behandeling van bednette.

- Gebruik 'n geskikte houër / emmer / skottel of sak wat groot genoeg is om die bednet asook die volume water te hou.
- Behandel die nette in 'n goed geventileerde vertrek, verkieslik buitekant, en maak gebruik van handskoene.
- Vul die houër met die verlangde volume water en voeg die nodige volume **FENDONA® 6** by (vir volumes benodig kyk tabelle hierbo).
- Doop die net in die mengsel todat dit deurweek is.
- Verwyder die net en laat toe dat enige oortollige oplossing terug drup in die houër. (Indien die korrekte volume mengsel gebruik is, sal net 'n klein volume oorbly).
- Laat toe dat die net droog word deur dit plat op 'n bed of beddegoed neer te lê (op dié manier word weeluisse ook beheer). Dit kan ook buite in die skadu, op plastiek neergelê word.
- Hang dit bo-oor die bed sodra dit droog is.
- Nadat die bednette behandel is, moet hande, arms en die houers gewas word. Doen weg met die waswater op so 'n manier dat dit nie gewasse, weiding, riviere of damme sal besoedel nie.
- Indien die net gewas word nadat dit behandel is, sal die beheer nie dieselfde wees nie en word aanbeveel dat die behandeling herhaal word.
- **FENDONA® 6** sal nie bednette vlek of 'n reuk nalaat nie. Nette sal ook nie meer vlambaar wees nie.
- Vir die gelyktydige behandeling van 'n aantal identiese nette, vermengvuldig die volume water sowel as die volume **FENDONA® 6** wat vir een net benodig word, met die aantal nette wat behandel wil word.

Alle toedienings moet gemaak word met geskikte toerusting wat in goeie werkende toestand en korrek gekalibreer is ten einde die verlangde bedekking te gee vir die betrokke toedieningsmetode.

PLAAG	DOSIS	TOEDIENINGSVOORSKRIFTE
VELLE EN HUIDE Velkewerlarwes	35 ml/10 l water	Velle en huid: Benat alle dele deeglik. Herhaal die behandeling elke 3 maande of indien nodig.
Volwasse velkewers	35 ml/10 l water	Opbergingsperseelvloere, -mure en ander oppervlakke: Dien die spuitmengsel tot punt van afloop toe. Herhaal die behandeling elke 3 maande of indien nodig.
VOLWASSE MUSKIETE (Malariavektore ingestuit)		Verskeie maande van beheer kan binnenshuis ver wag word teen die hoër dosis (160 ml/10 l water) en tussen 4 – 6 weke beheer teen die laer dosisse. Die lengte van beheer word bepaal deur die dosis toegedien en die betrokke oppervlak wat behandel word. Kyk ook Algemene Aanwysings onder GEBRUIKSAANWYSINGS hierbo.

PLAAG	DOSIS	TOEDIENINGSVOORSKRIFTE
	40 – 85 ml/10 l water (12 – 25.5 mg a.b. /m ²) 160 ml/10 l water (50 mg a.b. /m ²) 20 mg a.b. /m ² OF 40 mg a.b. /m ²	Dien as 'n growwe bespuiting toe op oppervlakke waar insekte sit en waar bespuiting elke 4 – 6 weke herhaal kan word. Dien tot punt van afloop toe. Gebruik die hoër dosis onder hoë infestasiedruk of waar langer periodes van beheer tussen toedienings verlang word. Herhaal indien nodig. MALARIAVEKTOR – OPPERVLAKBESPUITINGS Word aanbeveel as 'n oppervlakbespuiting op growwe oppervlakke (soos klei-, baksteen- binne- en buitemure, dakke en grasdakke). Gebruik hierdie dosis waar toedienings net een of twee maal gedurende die malaria infeksie periode van Oktober tot Mei gemaak kan word. Dien as 'n growwe bespuiting toe deur gebruik te maak van 50 ml spuitmengsel /m ² . Indien die oppervlakke wat behandel sal word glad is, soos glas of hout, sal minder water benodig word om die punt van afloop te bereik (25 ml spuitmengsel /m ²). In hierdie geval moet 330 ml FENDONA® 6 /10 l water gebruik word om dieselfde konsentrasie nl. 50 mg/m ² te verkry. BEDNETBEHANDELING Meng die benodigde volume FENDONA® 6 met genoeg water om die bednet deeglik te benat en doop die bednet in hierdie oplossing. Gebruik die hoër dosis vir langer beheer. Verwys na tabelle hierbo om die korrekte volume FENDONA® 6 , asook volume water te bepaal, wat benodig word vir bednetbehandeling. Vir verdere inligting kyk ook onder Algemene aanwysings onder GEBRUIKSAANWYSINGS hierbo.
OPENBARE GESONDHEID Kakkerlakke (amerikaanse en duitse) Miere, Vismotte, Vlooië, Weeluisse Volwasse perdevlieë Volwasse vlieë.	40 – 85 ml/10 l water	Wend as 'n growwe bespuiting aan of dien met 'n kwas aan krake, holtes en enige plek waar insekte mag wegruip toe of op oppervlakke waaroor insekte mag beweeg of op gaan sit. Dien tot punt van afloop toe. Gebruik die hoër dosis onder hoë infestasiedruk of waar langer periodes van beheer tussen toedienings verlang word. Herhaal indien nodig.
PLUIMVEE-HOKKE Kleinmeelwurm / Alfitobius-kewer en -larwes (Alphitobius diaperinus)	40 – 85 ml/10 l water	Wend aan binne-oppervlakke van hokke as 'n growwe bespuiting toe en verseker goeie benatting van vloere, mure en alle ander oppervlakke waar kewers mag voorkom. Herhaal indien nodig. Dien hoër dosis toe waar langer periodes van beheer verlang word of waar hoë infestatie voorkom. Sien ook Algemene aanwysings hierbo. SORG DAT DIE VOËLS NIE DIREK RAAKGESPUIT WORD OF DAT SPUITNEWEL NA HULLE OORWAAI NIE.

ml
800



We create chemistry

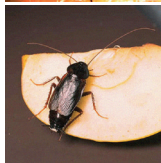
700

Fendona® 6

Reg. No. L5678; N-AR 0729;

Act No. 36 of 1947

READ ATTACHED PACKAGE OR LEAFLET BEFORE USE.
KEEP OUT OF REACH OF CHILDREN AND ANIMALS.



600

A long lasting suspension concentrate contact and stomach insecticide for the control of malaria vectors, nuisance and biting flies, cockroaches (american and german), bedbugs, fleas, mosquitoes, hide beetle larva, fishmoths, stableflies, ants and *Alphitobius* larva and beetle.

'n Suspensiekonsentraat kontak- en maaginsedoder met 'n lang nawerkende aksie vir die beheer van malarievektore, hinderlike- en steekvlieë, kakkertakke (amerikaanse en duitse), weeluis, vlooië, vismotte, muskiete, velkewerlarwes, perdevlieë, miere en *Alphitobius*-kewer en -larwe.

500

Very toxic to aquatic life with long lasting effects.
If medical advice is needed, have product container or label at hand.
Collect spillage.



Active ingredients / Aktiewe bestanddele:
Alpha-cypermethrin (Pyrethroid).....60 g/l

400

Registered by:
BASF South Africa (Pty) Ltd
Co. Reg. No. 66/10235/07
P.O. Box 2801
Halfway House 1685
+27 11 203 2400

Geregistreer deur:
BASF Suid-Afrika (Edms) Bpk
Mpy Reg. Nr 66/10235/07
Posbus 2801
Halfweghuis 1685
+27 11 203 2400

300

Batch No. & Date manufactured: Refer to details printed on container.
Lotnommer & Datum vervaardig: Verwys na besonderhede gedruk op houer
EMERGENCY NUMBER / NOODNOMMER: +27 82 446 8946



81164631 ZA 2102



200
ml

1 l

® = Registered trademark of BASF / Geregistreeerde handelsmerk van BASF